



# REGULA CENTER 2020 ANNUAL REPORT

# MESSAGE FROM THE DIRECTOR

When we began this academic year we did so with much enthusiasm, dedication to improving our work, excitement about new projects, and a desire to learn. We were able to use that energy to see great successes this year.

The Center served as an integral part of our new resource center, Raiders Cove. Our service projects saw great success this year with more than 1,000 participants. We began an assessment process to better the Center and have learned much from that experience. We also connected with state and national organizations to bring more opportunities to our students. We have continually grown the Civic Corners initiative and are expanding collaborations to enhance voter engagement.

The following pages highlight these accomplishments and more as we continued to be a recognized hub of activity on our campus and in the greater Alliance community. Our students are dedicated to leaving the world better than they found it and work on many ways to do so.

The end of this academic year did not bring what anyone pictured, but we weathered the storm. The students completed their academic work, finished service projects and Raiders Cove tasks from their homes, and did what they could to take care of one another. Some students even began working towards new programming that will launch in the fall.

The students we work with have accomplished so much and I look forward to how they will adapt, return, and continue making positive change in the future.



*Abby Honaker Schroeder*

Abby Honaker Schroeder  
'11, MPA | Director



Kylie Sees '20  
Author, Contributor

# FACULTY LIAISON | DR. LORI KUMLER

*Associate Professor, Political Science and International Studies  
Department of Political Science Internship Coordinator and  
Faculty Liaison to the Regula Center*

As the Faculty Liaison for the Center, Lori creates academic experiences and builds relationships across campus that relate to the work of the Center. She is the driving force behind many initiatives and spends a significant amount of time supporting increased voter resources, assessment, and student based projects that have an impact on the Mount Union community and beyond.

This year Lori was nominated by the Office of the President for the David Hoch Memorial Award for Excellence in Service. The annual award is given by Ohio Campus Compact with all member institutions being invited to select a nominee from their campus. It recognizes outstanding work in civic engagement and/or service-learning. Her nomination was supported by students, faculty, staff, high school educators, and the Center.

Fields of expertise: civic/political engagement and education, Brazil's water policy; environmental policy, climate policy/ climate adaptation, education policy, sustainability, role of social science and natural science in addressing environmental issues.



## **Academic Degrees:**

Ph.D., Natural Resource Policy and Behavior, University of Michigan School of Natural Resources and Environment

M.S., Resource Policy and Planning, University of Michigan

M.A.T., Secondary Social Studies Teaching, Tufts University

A.B., Public Policy, Educational Studies, Brown University

# ASSESSMENT

The Regula Center spent time this spring going through a formal co-curricular assessment using the standards outlined by the Council for the Advancement of Standards in Higher Education. Dean Kristine Still, Suzette Burlingame, Aimee Huter, and Kate Carnell steered an internal working group including Rodney Dick, Amber Hunt, Haley Crews, and Hannah Sissler as they reviewed materials gathered by Abby Schroeder and Lori Kumler.

Following that process, external reviewers Dick Kinsley, Jen Domogal-Goodman, and Rebecah Verhoff-Kiss assessed the work of the Center. Findings and a plan based on the results will be shared in the fall of 2020.



# RAIDERS COVE

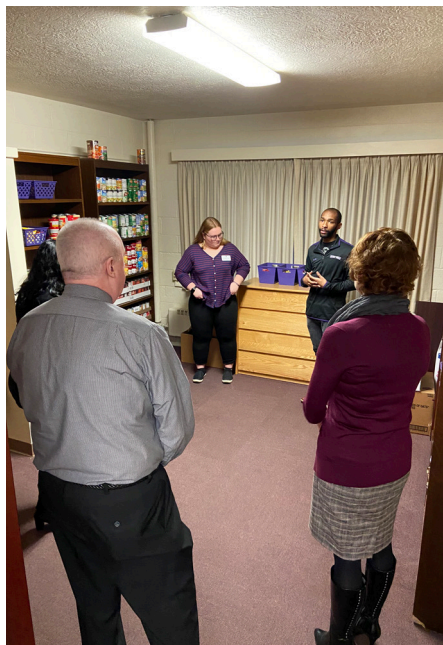
Raiders Cove is a newly opened student resource center designed by Mount Union students, Destanee O'Neil and Logan Cooper who are serving as AmeriCorps members in partnership with the Regula Center. It focuses on helping students with needs such as food, hygiene items, clothing, and more.

Food and hygiene items are at no cost to students, and recycled clothing is made available at low, affordable prices after hearing feedback from students. With a discrete and private on-campus location, students are able to access needed items that they may otherwise not have access to throughout the week. Students are also able to volunteer or donate items to help support Raiders Cove, making it an all inclusive environment for positive change on campus.



# RAIDERS COVE

The program is supported by Serve Ohio, AmeriCorps, and Ohio Campus Compact with on campus support coming from the Regula Center, the Center for Student Success, the Chapel, and the Office of the President. Other offices made significant contributions to support these efforts including donations of a refrigerator from Raider Student Media and a mobile cart from the Integrative Core.



Learn more about Raiders Cove at [mountunion.edu/raiders-cove](https://mountunion.edu/raiders-cove).

# EVENTS

## Richard Regula at Massillon Museum

Stark County Commissioner Richard Regula, son of the late Ralph '48 and Mary (Rogusky '49) Regula, presented "Ralph Regula: The Congressman Seated through Seven Presidents" at the February 25 Brown Bag Lunch event at the Massillon Museum. At the event, Regula used artifacts and information from the Center.



## Pajama Drive

The Regula Center participated in a pajama drive to support those at Akron Children's Hospital. Students were able to drop off new, children's pajamas to the Regula Center to be donated. A small student group raised money to purchase pajamas and was able to donate more than 165 items to the cause for children of all ages. In total, more than 1,800 pairs of pajamas were collected and donated.



## Propel Ohio

Hosted by Senator Sherrod Brown, Propel Ohio is a one-day program promoting leadership, civic engagement, and action among college students in Ohio. The annual conference brings together student representatives from throughout the state and features a variety of guest speakers. The 2019 conference was held at Bowling Green and Mount Union was represented by four students and Center Director.



# EVENTS

## Think Big Conversations

The Stark Community Foundation hosted Think Big Stark to start conversations surrounding the improvement of the county. Solutions to community needs were brainstormed by community members and organizations across various locations in Stark County. The Regula Center coordinated and sponsored five conversations held on Mount Union's campus. The topics included childcare, education, environment and public space, employment and entrepreneurship, and community improvement with hosts including Abby Schroeder, Kyle Woodrow, Jamie Greiner, Tammi Kohl-Kennedy, and Sara Fugett.

**MOUNT UNION**  
**Makes a Difference**  
Regula Center for Public Service & Civic Engagement



## Serve Ohio Conference Presentations

The Ohio Conference on Service and Volunteerism hosted by Serve Ohio featured a presentation about the Regula Center's model for one day service projects highlighting the MLK Day of Service. The Center Director shared the work done at Mount Union to increase participation in the MLK Day of Service and mobilize hundreds of volunteers.





# EVENTS

## AMS Speaker Series

The Regula Center coordinated a bi-weekly speaker series at Alliance Middle School in an effort to enhance their classroom learning and expose them to opportunities available as a college student. Speakers covered topics including study abroad, sustainability, student athlete success and making healthy choices. The faculty and staff who supported these sessions included John Myers, Director of INCUBOX, Jamie Greiner, sustainability and campus outreach coordinator, Emily Fisher, head women's lacrosse coach and assistant athletic director, Doug Granger, assistant director of the center for global education, and Beth Canfield-Simbro, associate professor of education.



## Meet the Candidates Night

The Meet the candidates night was an event open to the public as well as students in which individuals from the stark county ballot and district wide representatives gathered to give a short speech and talk one-on-one with attendees. Students and community members that attended the event had the opportunity to ask questions on the campaigns or issues of the candidates directly as well as hear highlights from their campaigns in a welcoming setting. Promoting civic responsibility by giving students the opportunity to get involved is a goal of the Center.

# EVENTS

## Pathway Program

The Center coordinated a mentoring program for youth through Pathway Caring for Children. Stark County families use Pathway for mental health, foster care, and adoption services. Teens in the program were invited to campus every other week to spend time with Mount Union students, eat dinner in the cafeteria, and hear from guest speakers about life at Mount Union.

## Academic Challenge

The 42nd annual Academic Challenge was hosted by the Regula Center and the Alliance Kiwanis Club featuring six local high school teams. The Center hosted lunch with keynote speaker, Caitie Shimp, Assistant Director of the Mount Union Fund and presented the winning team with a scholarship for a student from their school. Dr. Keith Miller served as the quizmaster, Dr. Theresa Davis the judge, and the winning team was Alliance High School.



# ALL IN CHALLENGE

The Center has submitted Mount Union's action plan through the ALL IN Campus Democracy Challenge in efforts to improve voter engagement across campus. Participation in the Challenge has provided many opportunities for the Center and will support efforts launching this coming fall. The success of this work is demonstrated through NSLVE data and possible through campus partnerships including that of Gina Maida in the library.

## MISSION

The ALL IN Campus Democracy Challenge empowers colleges and universities to achieve excellence in student democratic engagement.

A Guide for Developing an Action Plan to Increase Civic  
Political Engagement, and Voter Participation Among

SECOND EDITION, AUGUST 2019

# ALL IN CHALLENGE

## **Awards**

The Center was represented at a working session and awards presentation in Washington DC. in November where Mount Union was awarded a Silver Seal of Excellence for reaching a voter turnout between 30-39% during the 2018 midterm election.

## **OAC Challenge**

The Center is expanding its relationship with the ALL IN Challenge and will serve as coordinators for an athletic conference challenge among Ohio Athletic Conference Schools. The Conference and all presidents within it have endorsed the challenge which will launch in the fall of 2020.

## **Voter Friendly Campus**

The Center is dedicated to continuing this work and increasing our ability to support students in ways that have a meaningful impact. We are seeking designation as a Voter Friendly Campus as well as beginning partnerships with various organizations including Because I Care, Campus Election Engagement Project, and Ask Every Student.



# MONTHLY SERVICE PROJECTS

## September - Trail Clean-Up

A dedicated group of students and community members woke up early on a beautiful Saturday morning to clean up a local trail near campus in partnership with Stark Parks. The efforts made a large impact, filling a truck with full garbage bags and beautifying a trail sure to be utilized by students and community members alike.

## October - Pillowcase Making

On a Thursday evening, a group of 15 students gathered at the Regula Center to measure, cut, and sort fabric to make pillowcases for the Valentine Project, a nonprofit organization seeking to bring joy to children impacted by pediatric cancer or chronic illness. The students were able to make their way through 132 pillowcases!



## October - Trick-or-Treat for Canned Goods

Despite holiday-themed festivities across campus, on October 31, students went out into the community to collect non-perishable food items from generous donors alerted by students in the previous weeks. In just two hours, 3,146 pounds of food was collected and donated.

## November - Blanket Making for Veterans

In honor of Veteran's day on November 11th, students gathered at the Regula Center to measure, cut, and tie together homemade blankets to be donated to veterans. The event earned the attention of many students and lasted over seven hours, as they were passionate to give a heartfelt token of appreciation to the heroes at the VA Hospital.

# MONTHLY SERVICE PROJECTS



## **November - Thanksgiving Dinner**

The Regula Center continued its annual November tradition of hosting a community-wide Thanksgiving dinner. The event is always free and open to the public. Mount Union students volunteered over the course of two days with the Center to ensure the event ran smoothly at the Alliance Salvation Army. Volunteers gathered together to cook and serve more than 300 meals while also interacting with members of the Alliance community, providing a warm meal and welcoming space for the holiday.

## **December - Christmas at the Park**

Students set aside their fears of final exams and cold weather to make the holidays a little more special for community members by volunteering for Christmas at the Park. A multitude of activities required volunteers such as handing out wrapped books and sweet treats to local children that students had prepared in the days leading up to the event!

## **Holiday Season - Adopt-a-Family**

Each year, the Regula Center sponsors local families in need in an attempt to make their holidays a little brighter. Students and faculty could pick up listed needed items with their holiday shopping and drop off at the Regula Center to support 50 children across 12 families. Student Assistants were then able to organize the donations and pair them with gifts donated through the Student Alumni Association giving tree project, so each of the 12 families was provided a complete set of useful gifts. The large kits were personally tailored to the needs of each family and delivered over the holidays.

## **February - Nursing Homes for Valentine's Day**

Students signed up to visit nursing homes in the area to spread Valentine cheer to residents! Groups traveled to their designed nursing home to chat, solve puzzles, and do Valentine-related activities with residents.

## **February - Wreath and Blanket Making**

Students packed the Regula Center the evening of February 25th to create tie blankets and wreaths for donation to various organizations in the community. Volunteers were eager to help design matching patterns, create wreaths and blankets, and even clean up after the conclusion of the event.



# 2020 MLK DAY OF SERVICE

The annual MLK Day of service is a signature yearly event for the Regula Center that students look forward to all year. It mobilizes more volunteers than any other event in the Alliance area. This year, on Monday, January 20, there were 527 students, faculty members, and community volunteers who met early in the morning at Mount Union's Fieldhouse to spend their day-off selflessly serving the local community alongside 30 partner organizations.



# STUDENT ASSISTANTS

The Center's foundation is the work of dedicated student assistants who create programs, perform daily office tasks, recruit participants, and much more. Each year the Center hires student employees and works with some who intern or volunteer their time.

## 2020 GRADUATING ASSISTANTS:

### Kylie Sees

Major - Marketing and Finance  
Hometown - Akron, Ohio  
Years of Employment - 2

"Many of my most cherished Mount Union memories have been made at or through the Regula Center. Seeing the impact of the Center on both the campus and community, and the dedication of Abby and the other student assistants, was so inspiring. Because of the Regula Center, I know that I am a better person and a more impactful leader."



### Destanee O'Neil

Major - Early Childhood  
Education and Psychology  
Hometown - North Benton, OH  
Years of Employment - 2

"Over the past two years the Regula Center has been like home. Through the Regula Center I have met my second family who have inspired me to be my best. This experience has made me a better communicator and leader in the community."



### Matthew Honaker

Major - Mechanical Engineering  
Hometown - Fresno, OH  
Years of Employment - 3

"The Regula Center is a place that taught me so much about leadership and how the behind-the-scenes operation of service is conducted. I had the privilege to work and volunteer with amazing people and a great boss. The Regula Center has allowed me to complete the service I have loved my whole life and to give back to the amazing community of Alliance."



### Nichole Will

Major - Nursing  
Hometown - Mentor, OH  
Years of Employment - 3

"I loved working at the Regula Center, because it allowed me the opportunity to work alongside and form relationships with students and faculty who I otherwise would not have known. I also enjoyed working within the Alliance community and seeing, first hand, the incredible impact Mount Union has made on the lives of others."





# STUDENT ASSISTANTS

## 2020 GRADUATING ASSISTANTS (cont.):

### Lauren Skulina

Major - Psychology  
Hometown - Mentor, OH

"My time working at the Regula Center was meaningful because I learned new ways to support students and the community. I was able to meet new people and make connections within the community in my final year at Mount Union."



### Alyssa Adams

Major - Neuroscience  
Hometown - Mentor, OH

"I loved working for the center because it made me realize how easy it is to make connections within the community. I feel so much more in touch with different organizations and can really see the impact of the work we do."



### Hannah Schulz (Intern)

Major - International Affairs and Diplomacy

### RETURNING ASSISTANTS:

Gina Hoffman  
Riley Rowles



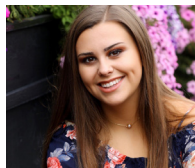
# REGULA SCHOLARS

The Center began the Regula Scholars Program in an effort to recognize outstanding students and provide them with additional opportunities. This program was initiated and continues to be possible thanks to a lead endowed gift from Bob '67 and Linda DeHoff. An additional endowed gift was added by David '63 and Elaine (Venen '63) Dabelko in 2014. Since then, all funds raised for the Regula Center have been added to endowments for the Regula Scholars. The Scholars are nominated by faculty and participate in a lengthy selection process. Through the program they participate in training about public service, ethics, and leadership. Each Scholar takes part in at least 150 hours of community or public service. They each receive a stipend for experiential learning and tuition assistance.



## **Francesca Bowman '21**

Major: Middle Childhood Education  
Involvement: Black Student Union, Kappa Delta Pi, Resident Assistant, Raider Relation Call Center



## **Cassidy Page '22**

Major: Psychology  
Involvement: Delta Sigma Tau, Union Hospital Volunteer, Middle School Mentor



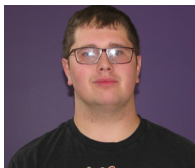
## **Tianna Kirkpatrick '21**

Major: Political Science  
Involvement: Pre-Law Society, Political Science Club, Pi Sigma Alpha, Model United Nations, Alliance Church of Christ



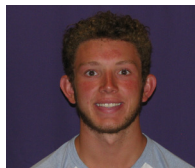
## **Jake Penko '21**

Majors: National Security and Foreign Intelligence Analysis; International Affairs and Diplomacy  
Involvement: Varsity Football Team, Alpha Lambda Delta, National Security and International Affairs Club, Pi Sigma Alpha, Fellowship of Christian Athletes



## **John Madison '21**

Major: Political Science and History  
Involvement: Assistant Scoutmaster Troop 177, Jazz Ensemble, Transfer Student Organization, Union Avenue Church Praise Band, Pi Sigma Alpha



## **Ben Trenka '22**

Major: Biology  
Involvement: Green Raiders, American Chemical Society, math tutor, health coach, FCNL Spring Lobby Weekend participant



## **Farrel Murphy**

Major: Political Science and Religious Studies  
Involvement: Student Interfaith Alliance, Delta Sigma Tau, Alpha Lambda Delta, Pre-Law Society, Political Science Club, Admissions Ambassador



## **Ashley Weaver '21**

Major: Nursing  
Involvement: Alpha Phi Omega, Student Nursing Association, Relay for Life

# CIVIC CORNERS



Throughout the past year the Center has expanded the reach of Civic Corners which are now located at more than a dozen locations throughout the country. To date, the Civic Corners at Mount Union have been used to complete 55 voter registrations and 147 absentee ballot requests. They have also been used to send postcards to elected officials and supported efforts such as the Green Raiders participation in the Global Climate Strike and other student organizations with special interests. The Civic Corners are available for purchase through the Mount Union bookstore and the Center plans to continue encouraging their use locally and purchase throughout the county.

# MISSION AND VISION

The mission of the Regula Center for Public Service and Civic Engagement is to promote civic engagement, community outreach, and experiential learning with an emphasis on ethical decision-making, high standards of inclusivity, ingenuity, and long-lasting partnerships to make positive change.



The vision of the Ralph and Mary Regula Center for Public Service and Civic Engagement is four-fold:

1. Mount Union will become a significant conduit of prepared and motivated individuals seeking careers in local, state, and federal government in a wide variety of capacities.
2. Access to a comprehensive service-learning community service program will allow students opportunities to become involved in activities which lead to enhancement of their long-term commitment to civic engagement, social responsibility, and public service.
3. The academic and intellectual climate of Mount Union will be enhanced by expanding beyond the boundaries of the traditional classroom.
4. Mount Union will have a lasting, positive effect on the broader community by developing partnerships and conducting research designed to address key community needs and important social problems.



# BE MOUNT UNION



The Regula Center  
1972 Clark Ave., Alliance, OH 44601  
(330) 829-8168  
honakeal@mountunion.edu  
mountunion.edu

   @mountunion

 @universitymountunion

 University of Mount Union